

BAR LIST-PER BENT

GENERAL NOTES:

1. All concrete shall be Class "S". (AE) ($f'c = 4,000$ psi).
2. Reinforcement steel shall conform to AASHTO M31 or M53, Grade 60. ($f_y = 60,000$ psi).
3. Approach slabs will be measured and paid for in accordance with Section 504 of the Standard Specifications.
4. This drawing to be used with Dwg. 47105.

TABLE OF QUANTITIES

ONE APPROACH SLAB

Reinforcing Steel (Lbs.)	Concrete (c.y.)
5919	48.5

Not a Part of this Contract
For Information Only

ALTERNATES NO. 1 & NO. 2

DETAILS OF SPECIAL APPROACH SLAB

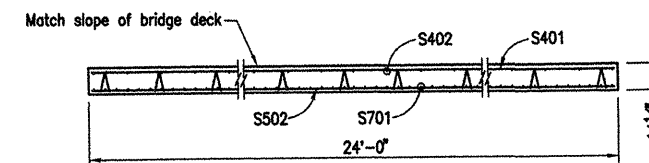
WHITE RIVER STR. & APPRS.
(CLARENDON) (PH III) (F)
MONROE COUNTY

ROUTE 79 SEC. 13

ARKANSAS STATE HIGHWAY COMMISSION
LITTLE ROCK, ARK.

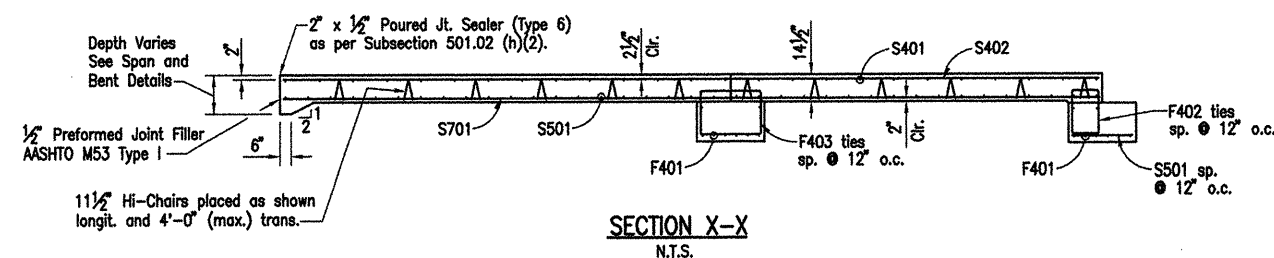
Engstrom/Modjeski and Masters, Inc.

DRAWN BY: PMR DATE: Nov. 07 FILENAME: b110395.q1
CHECKED BY: YO DATE: Nov. 01 SCALE: 1/4" = 1'-0"
DESIGNED BY: FS DATE: Nov. 01
BRIDGE NO. 06830 DRAWING NO. 47104

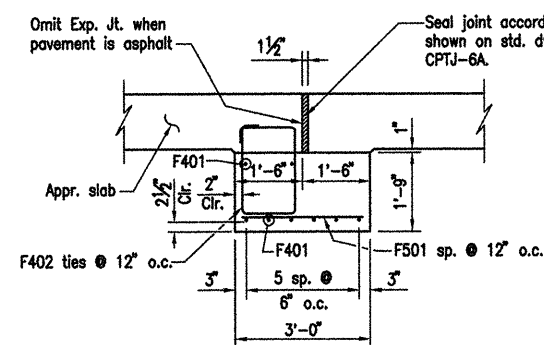


SECTION Y-Y
N.T.S.

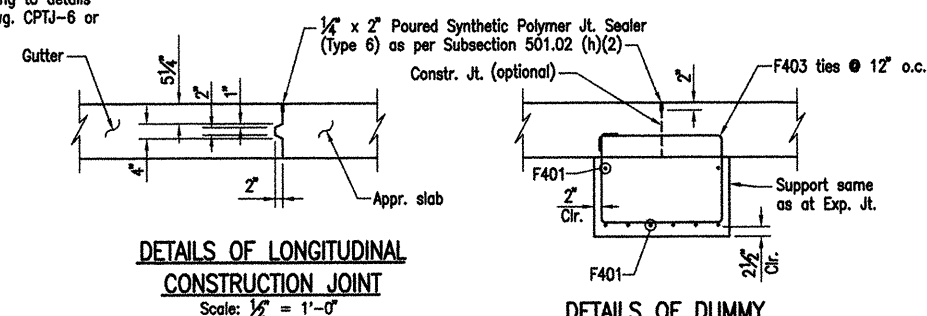
PLAN - APPROACH SLAB
Scale: $\frac{1}{4}" = 1'-0"$



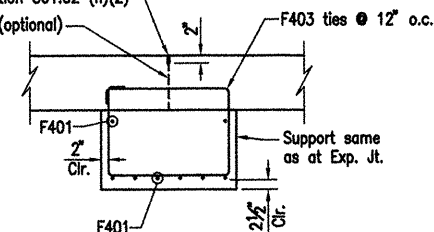
SECTION X-X
N.T.S.



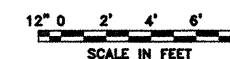
DETAILS OF SUPPORT
AT EXPANSION JOINT
Scale: $\frac{1}{8}" = 1'-0"$



DETAILS OF LONGITUDINAL
CONSTRUCTION JOINT
Scale: $\frac{1}{8}'' = 1'-0''$



DETAILS OF DUMMY
GROOVED JOINT
Scale: $\frac{1}{8}'' = 1'-0''$



BRIDGE ENGINEER